



# TGRG

## Gas/Electric Packaged Unit

14 SEER

### SPECIFICATIONS

#### REFRIGERANT SYSTEM

- Environmentally friendly R410A refrigerant
- Copper tubing with enhanced fin coils
- Internal service gauge ports

#### HEAT EXCHANGER

- Aluminized Tri-Dimple tubular heat exchanger for increased efficiency
- Pest protected flue outlet

#### CABINET CONSTRUCTION

- Rounded corners for safety and an attractive, clean appearance
- One piece base design for strength and stability
- Drain ports for condensate management and coil runoff
- Low profile, with compact footprint
- Insulation to minimize heat loss plus reduce sound
- Textured pre-painted steel cabinet finish
- Superior service access to components
- One piece “no leak” top design

#### BLOWER

- Insulated compartment to reduce sound
- Efficient multispeed motor for wide airflow range
- Slide out blower housing for easy service

#### CONTROLS

- Solid state integrated blower control board with L.E.D. self diagnostics
- Direct spark ignition
- Color coded wiring for easy service

#### INSTALLATION

- Horizontal or down discharge capable
- Utility connections on “right side”
- Tabbed duct flanges for simple duct connection

#### ACCESSORIES

- Hinged roofcurb
- Lifting brackets
- LP Gas Conversion
- Internal Filter Kits

#### WARRANTY

Standard warranty or Extended warranty available with product registration. See warranty document for details or visit [www.marsdelivers.com](http://www.marsdelivers.com)



## MODEL NUMBER GUIDE

<b>T</b>	<b>G</b>	<b>R</b>	<b>G</b>	<b>24</b>	<b>54</b>	<b>1</b>	<b>M</b>
Package Unit	Gas/Electric	Residential	'Green' Gas R-410A	Nominal Cooling Capacity BTUH x 1000	BTUH x 1000	Power 208/230-1-60	Series/Revision

## ELECTRICAL AND PHYSICAL DATA

Model	Voltage	Phase	Hz	Min Volts @ 60 hz	MCA	Max Fuse/HACR Breaker	Compressor		Condenser Motor		Blower Motor		Refrig. Charge (oz.)	Weight (lbs.)
							RLA	LRA	RLA	HP	RLA	HP		
TGRG24541M	208-230	1	60	197	16.7	25	11.2	60.8	1.0	1/6	1.7	1/4	70	334
TGRG24721M														340
TGRG30541M														346
TGRG30721M					30	12.8	64	77			352			
TGRG36721M											365			
TGRG36901M											371			
TGRG42721M					40	15.9	85	84	2.8	1/3	84	432		
TGRG42901M												438		
TGRG481081M												1.7	1/4	2.8
TGRG481261M					454									
TGRG601081M					7.6	1.0	125	485						
TGRG601261M								491						

## PERFORMANCE

MODEL	COOLING					HEATING				Sound dBA
	Rated AHRI Capacity Btuh	SEER	EER	Rated Sensible Capacity Btuh	CFM	Input BTUH	Output BTUH	Efficiency AFUE	Temp Rise Range F	
TGRG24541M	22,600	14.0	11.0	16,500	800	54,000	43,800	81%	30-60	78
TGRG24721M						72,000	58,400		40-70	
TGRG30541M	28,400			20,700	1000	54,000	43,800		30-60	
TGRG30721M						72,000	58,400		40-70	
TGRG36721M	34,000			25,800	1200	72,000	58,400		35-65	
TGRG36901M						90,000	72,900		40-70	
TGRG42721M						40,000	30,000		1400	
TGRG42901M	90,000			72,900	40-70					
TGRG481081M	46,000			35,000	1600	108,000	87,500		40-70	
TGRG481261M						126,000	102,100		45-75	
TGRG601081M	57,000			41,600	1800	108,000	87,500		40-70	
TGRG601261M						126,000	102,100		45-75	

Units certified in accordance with Unitary Air Conditioner Certification Program, which is based on AHRI Standard 210/240

## BLOWER PERFORMANCE

Model	Blower Tap	CFM @ ext. Static Pressure in in. wc without filter, dry coil							
		0.1	0.2	0.3	0.4	0.5	0.6	0.7	0.8
TGRG24 TGRG30	2	1350	1310	1270	1210	1140	1080	1020	950
	3	1110	1080	1050	1000	970	920	870	800
	4 <sup>1</sup>	970	950	920	890	850	820	770	710
	5 <sup>1</sup>	840	820	800	770	750	720	680	620
TGRG36	2	1460	1380	1280	1190	1100	990	880	760
	3	1350	1280	1200	1130	1060	950	870	750
	4 <sup>1</sup>	1080	1030	960	900	830	750	700	650
TGRG42	2	1790	1740	1670	1590	1510	1410	1310	1210
	3	1500	1470	1430	1370	1310	1240	1140	1010
	4 <sup>1</sup>	1070	1050	1010	980	920	870	820	690
TGRG48	2	1970	1890	1790	1690	1600	1510	1400	1280
	3	1730	1690	1600	1540	1450	1360	1270	1150
	4 <sup>1</sup>	1520	1480	1430	1370	1310	1230	1140	1050
TGRG60*	1	2240	2200	2140	2100	2060	2020	1980	1950
	2	1920	1870	1820	1770	1720	1670	1450	1360
	3	1400	1320	1260	1200	1120	1060	980	900

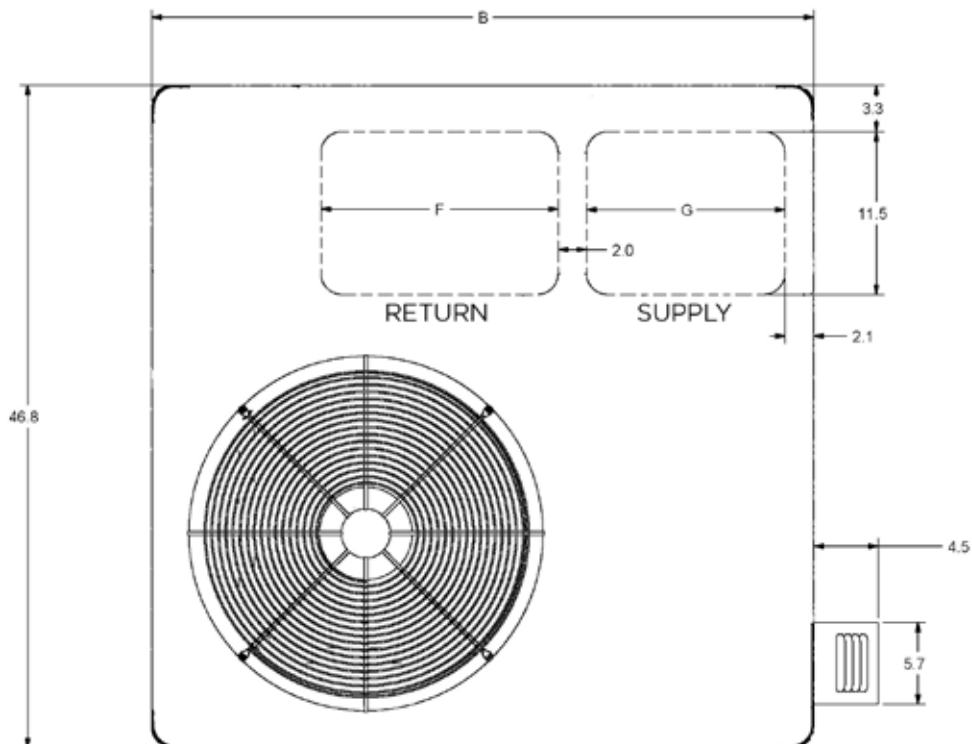
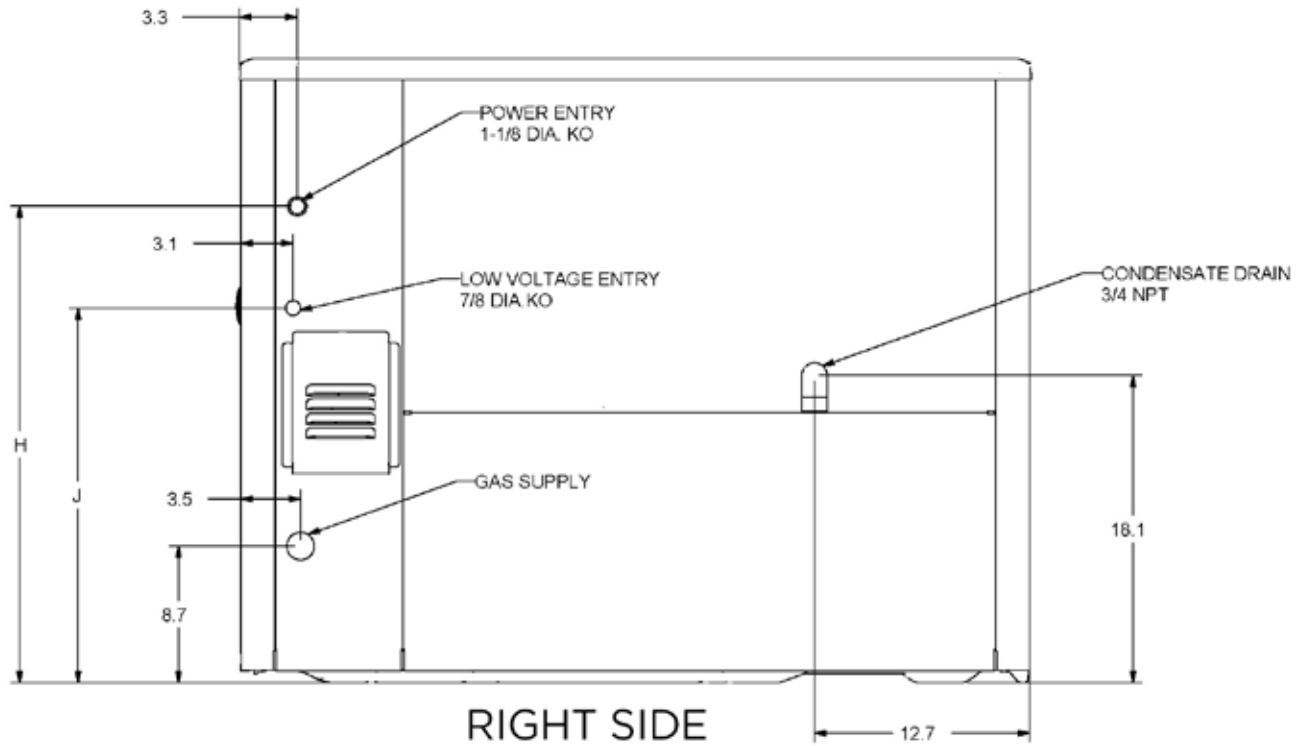
<sup>1</sup> TAPs 4 & 5 are for Furnace mid point rise.

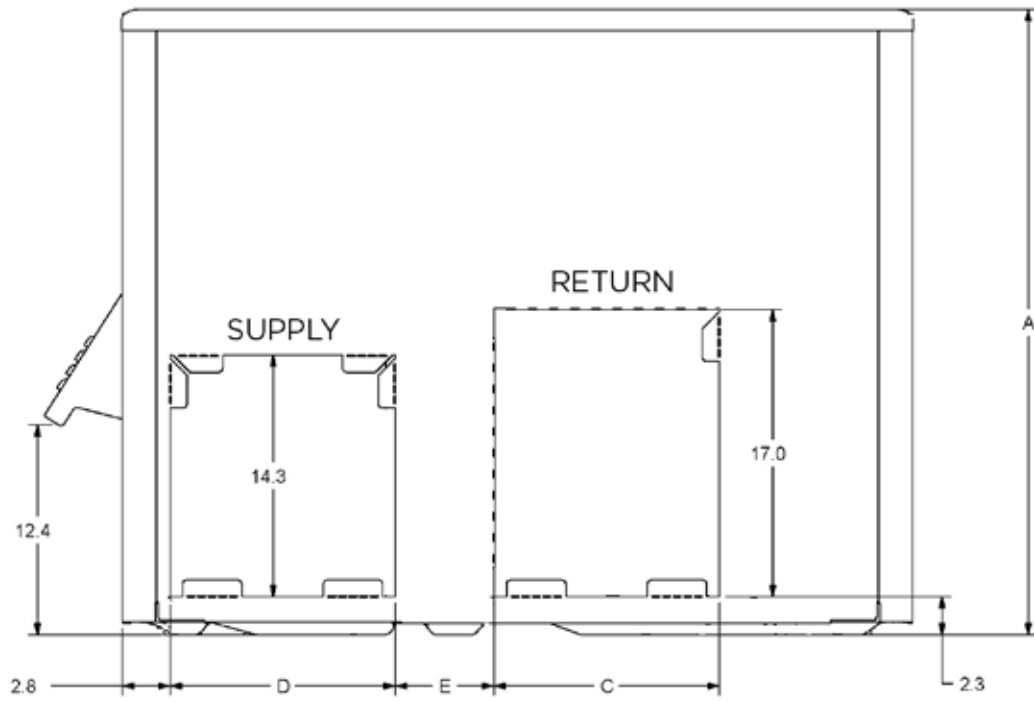
## COOLING PERFORMANCE - EXTENDED RATINGS

Outdoor Model	Indoor Temp DB/ WB °F	Outdoor Temperature - DB °F														
		65°			82°			95°			105°			115°		
		Btuh	S/T	kW	Btuh	S/T	kW	Btuh	S/T	kW	Btuh	S/T	kW	Btuh	S/T	kW
TGRG24	85/72	31,700	0.62	1.45	29,100	0.63	1.73	27,100	0.64	1.95	25,000	0.71	2.13	22,900	0.78	2.31
	80/67	28,600	0.68	1.45	25,700	0.71	1.72	23,600	0.73	1.98	22,200	0.78	2.15	20,900	0.84	2.33
	75/63	26,100	0.70	1.46	24,000	0.72	1.75	22,300	0.75	1.96	20,800	0.81	2.15	19,400	0.87	2.34
	75/57	22,400	1.00	1.46	20,800	1.00	1.75	19,600	1.00	1.98	19,100	1.00	2.16	18,700	1.00	2.35
TGRG30	85/72	36,800	0.64	1.80	34,200	0.65	2.11	32,200	0.66	2.35	29,800	0.72	2.61	27,300	0.77	2.87
	80/67	33,100	0.72	1.78	31,400	0.72	2.07	28,900	0.73	2.34	26,900	0.78	2.60	24,800	0.84	2.87
	75/63	30,000	0.76	1.78	28,200	0.75	2.09	26,800	0.75	2.34	25,100	0.81	2.61	23,300	0.88	2.88
	75/57	27,500	1.00	1.79	25,000	1.00	2.11	23,200	1.00	2.35	22,900	1.00	2.61	22,600	1.00	2.87
TGRG36	85/72	45,000	0.68	2.20	41,300	0.67	2.58	38,400	0.67	2.87	36,100	0.71	3.19	33,700	0.76	3.50
	80/67	41,200	0.73	2.20	37,400	0.73	2.53	34,500	0.76	2.86	32,800	0.79	3.18	31,100	0.82	3.50
	75/63	38,500	0.75	2.19	35,300	0.78	2.58	32,900	0.80	2.87	31,000	0.83	3.18	29,100	0.85	3.49
	75/57	35,500	1.00	2.19	33,000	1.00	2.57	31,000	1.00	2.87	29,500	1.00	3.18	27,900	1.00	3.49
TGRG42	85/72	53,600	0.63	2.66	50,200	0.65	3.14	47,600	0.67	3.51	43,600	0.73	3.84	39,500	0.79	4.18
	80/67	50,200	0.69	2.65	46,000	0.73	3.08	42,700	0.75	3.50	39,500	0.81	3.84	36,300	0.87	4.19
	75/63	47,200	0.73	2.64	42,800	0.76	3.10	39,500	0.79	3.45	36,600	0.84	3.82	33,800	0.89	4.20
	75/57	42,800	1.00	2.63	38,500	1.00	3.09	35,300	1.00	3.44	34,000	1.00	3.82	32,700	1.00	4.20
TGRG48	85/72	64,900	0.63	3.15	58,200	0.66	3.63	53,100	0.69	3.99	48,600	0.74	4.38	44,100	0.78	4.76
	80/67	59,200	0.71	3.04	52,300	0.73	3.52	47,500	0.76	3.97	44,100	0.81	4.36	40,800	0.87	4.76
	75/63	53,200	0.74	3.02	47,400	0.78	3.51	42,900	0.81	3.89	40,500	0.85	4.32	38,000	0.89	4.75
	75/57	46,500	1.00	2.99	42,100	1.00	3.49	38,700	1.00	3.87	37,800	1.00	4.31	36,800	1.00	4.75
TGRG60	85/72	70,300	0.63	3.50	66,100	0.64	4.19	62,800	0.65	4.72	59,100	0.70	5.27	55,500	0.76	5.82
	80/67	65,700	0.69	3.47	61,000	0.71	4.08	57,400	0.73	4.69	54,300	0.78	5.24	51,200	0.83	5.78
	75/63	61,400	0.72	3.45	56,300	0.74	4.12	52,300	0.76	4.63	50,200	0.80	5.19	48,000	0.85	5.75
	75/57	54,500	1.00	3.42	50,100	1.00	4.09	46,700	1.00	4.61	46,300	1.00	5.17	45,900	1.00	5.73

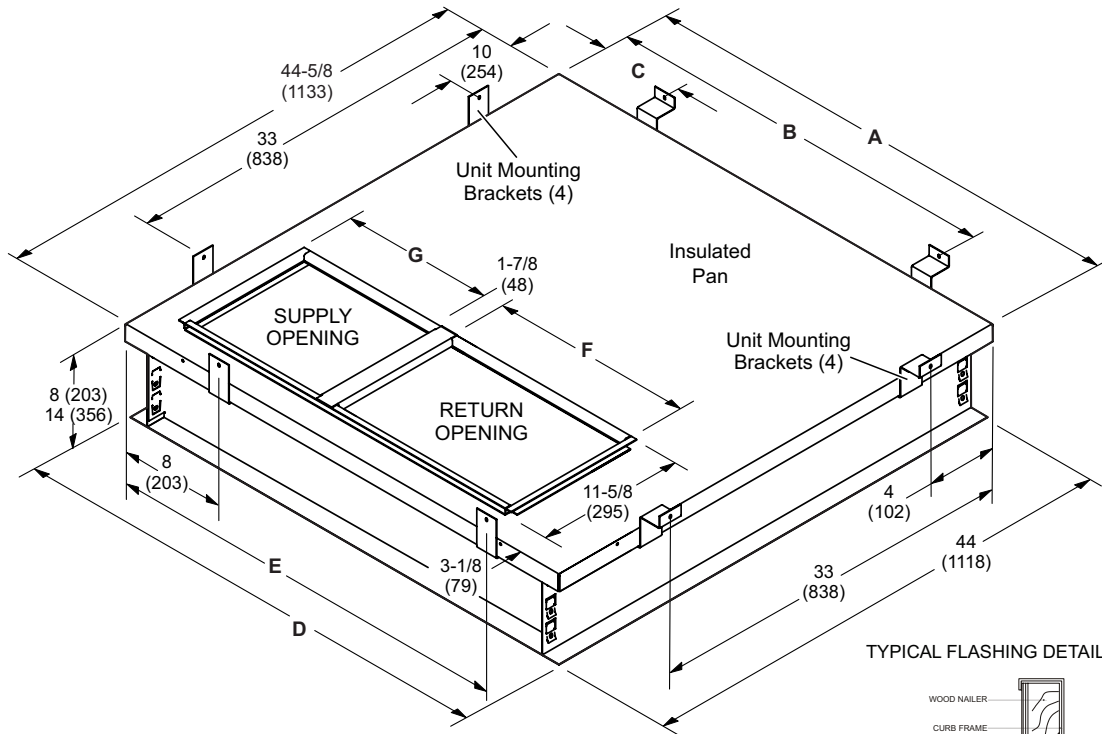
## DIMENSIONS (IN.)

Model	A	B	C	D	E	F	G	H	J
TGRG24	36.82	46.77	13.33	13.31	5.86	16.75	14	28.14	22.14
TGRG30									
TGRG36									
TGRG42	40.88	55.27	18.14	18.14	4.67	19.75	19.5	32.14	26.14
TGRG48									
TGRG60									

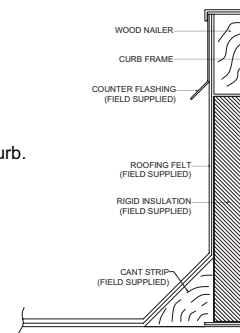




# ROOF CURB DIMENSIONS



TYPICAL FLASHING DETAIL



NOTE - Roof deck may be omitted within confines of curb.

Usage	A		B		C		D		E	
	in.	mm	in.	mm	in.	mm	in.	mm	in.	mm
24, 30, 36	44-5/8	1133	43	1092	18	457	44	1118	37	940
42, 48, 60	53-1/8	1349	51	1295	24	610	52-1/2	1334	41	1041
Usage	F		G							
	in.	mm	in.	mm						
24, 30, 36	16-3/4	356	14.00	425						
42, 48, 60	19-3/4	495	19.50	502						

## ACCESSORIES

Description	Where Used	Kit Number
Compressor Crankcase Heater	All	11X27
Compressor Hard Start Kit	24,30,36,60	10J42
Compressor Hard Start Kit	42,48	88M91
Compressor Timed-Off Control	All	47J27
Down Flow Conversion - ACONVR836	24,30,36	ACONVR836
Down Flow Conversion - ACONVR837	42,48,60	ACONVR837
Drain pan overflow switch	All	11U75
Filter Rack Kit	24,30,36	11U73
Filter Rack Kit	42,48,60	11U74
Lifting Brackets	All	11U76
LPG/Propane Conversion Kit	All	11U77
Roof Curb	24,30,36	11U78
Roof Curb	42,48,60	11U79
Sideflow Rect. to 14" Rounds Duct Adapter (Qty 25 sets)	24,30,36	R104617-01
	42,48,60	R104618-01
8" Height Full Perimeter Curb	24,30,36	14W71
8" Height Full Perimeter Curb	42,48,60	14W72
14" Height Full Perimeter Curb	24,30,36	14V68
14" Height Full Perimeter Curb	42,48,60	14V69

*Due to ongoing product improvements, specifications and dimensions are subject to change and correction without notice or incurring obligations. Determining the application and suitability for use of any product is the responsibility of the installer. Additionally, the installer is responsible for verifying dimensional data on the actual product prior to beginning any installation preparations.*

*Third party incentive and rebate programs have precise requirements as to product performance and certification. All products meet applicable regulations in effect on date of manufacture; however, certifications are not necessarily granted for the life of a product. Therefore, it is the responsibility of the applicant to determine whether a specific model qualifies for these incentive/rebate programs.*